

## Technical Specifications

No	Specification	Model	Model	Model
1	Rotary Motorized Microtome	AEM 450	AEM 460	AEM 480
2	Mode	Semi automatic	Semi automatic	(Fully-automatic) Single /Continue/ Manual three modes
3	Spacious magnetized section waste tray	Yes	Yes	Yes
4	Convenient storage area on top of instrument	Yes	Yes	Yes
5	Ergo-handwheel handle	Yes	Yes	Yes
6	Disposable blade holder with integrated safety finger protection guard	Yes	Yes	Yes
7	Pressure plate	Silver	Silver	Silver
8	Handwheel lockable in any position via brake lever	Yes	Yes	Yes
9	Distortion-resistant base plate ensures optimum overall stability.	Yes	Yes	Yes
10	With Emergency Stop switch	No	No	Yes
11	Blades used for:	Low & High profile disposable blade		
12	Two types of specimen clamp	Quick-release type specimen clamp & "C" type specimen clamp		
13	Compatible embedding	Paraffin, Plastic, unspecified bone		
14	Display panel	Yes	Yes	Yes
15	Memory Function	No	Yes	Yes
16	Separate control panel	No	Yes	Yes
17	Foot pedal control	No	No	Yes
18	Section thickness	0 to 600 $\mu\text{m}$ ; 0 $\mu\text{m}$ -2 $\mu\text{m}$ , in 0.5 $\mu\text{m}$ increments; 2 $\mu\text{m}$ -10 $\mu\text{m}$ , in 1 $\mu\text{m}$ increments; 10 $\mu\text{m}$ -20 $\mu\text{m}$ , in 2 $\mu\text{m}$ increments; 20 $\mu\text{m}$ -100 $\mu\text{m}$ , in 5 $\mu\text{m}$ increments; 100 $\mu\text{m}$ -600 $\mu\text{m}$ , in 50 $\mu\text{m}$ increments		
19	Trimming thickness	0 to 600 $\mu\text{m}$ 0 $\mu\text{m}$ -2 $\mu\text{m}$ , in 0.5 $\mu\text{m}$ increments; 2 $\mu\text{m}$ -10 $\mu\text{m}$ , in 1 $\mu\text{m}$ increments; 10 $\mu\text{m}$ -20 $\mu\text{m}$ , in 2 $\mu\text{m}$ increments; 20 $\mu\text{m}$ -100 $\mu\text{m}$ , in 5 $\mu\text{m}$ increments; 100 $\mu\text{m}$ -600 $\mu\text{m}$ , in 50 $\mu\text{m}$ increments		
20	Retraction	20 $\mu\text{m}$ , unadjustable	5-100 $\mu\text{m}$ in 5 $\mu\text{m}$ increments (could be turned off)	
21	Blades holder base repositioning (Left-Right)	50mm	50mm	50mm
22	Specimen horizontal feed	28mm	28mm	28mm
23	Vertical stroke	70mm	70mm	70mm
24	Maximum specimen size	40*50mm	40*50mm	40*50mm
25	Specimen holder orientation	$\pm 8^\circ$	$\pm 8^\circ$	$\pm 8^\circ$
26	Electric coarse feed Speed available	750 $\mu\text{m}/\text{s}$	300 $\mu\text{m}/\text{s}$ (slow) & 900 $\mu\text{m}/\text{s}$ (rapid)	300 $\mu\text{m}/\text{s}$ (slow) & 900 $\mu\text{m}/\text{s}$ (rapid)
27	Motorized cutting Speed			5 grades (1st: 100-164mm/s, 2nd: 164-228mm/s 3rd: 228-292mm/s 4th: 292-356mm/s 5th: 356-420mm/s)
28	Voltage/Frequency	100 V-240 V $\pm 10\%$ , 50 ~ 60 HZ		
29	Dimensions (W x D x H)	41 x 55 x 32cm	41 x 55 x 32cm	41 x 55 x 32cm
30	Weight	About 36 KG	About 37 KG	About 39 KG



AMOS SCIENTIFIC PTY.LTD.  
Address: 37/632 CLAYTON ROAD, CLAYTON SOUTH VIC 3169, AUSTRALIA  
Tel: +61-3-95518850 Fax: +61-3-95516885  
Website: www.amos-scientific.com  
Email: info@amos-scientific.com



AEM 450



AEM 460

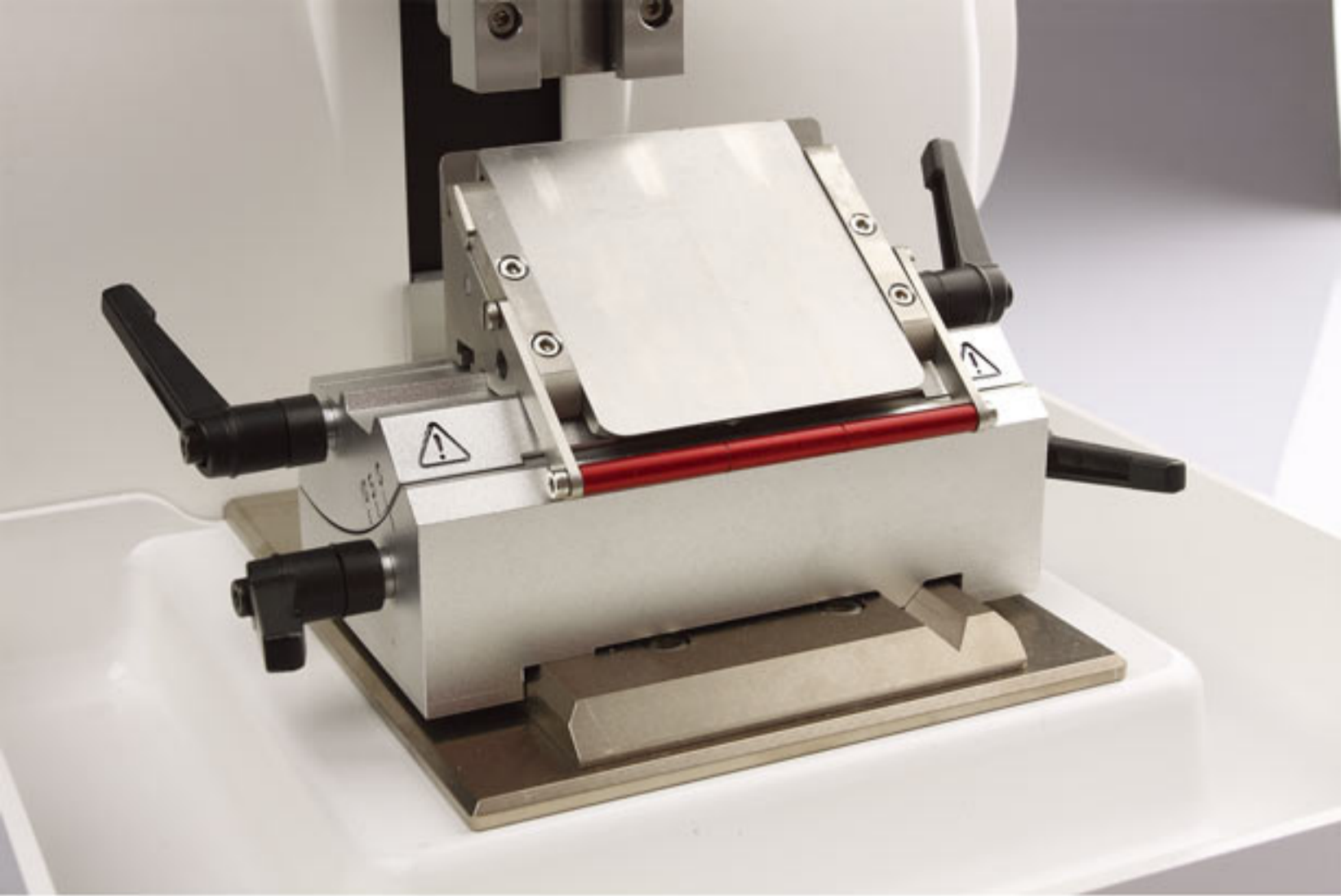


AEM 480



# Automated Microtome

BETTER HISTOLOGY SOLUTION  
BETTER LIFE FROM HEALTH



## AEM 450 Semi-automatic Microtome



AEM 450 is a semi-automatic rotary microtome, ideal for routine sectioning and research applications in histopathology and laboratories .

AEM 450 has the easy operation system, safe and high precision specimen feed system to offer the stable and superior sectioning results.

## AEM460 Semi-automatic Microtome

AEM 460 is a semi-automatic rotary microtome ,the robust instrument can be used for cutting hard materials.

The unique User-friendly display and the redesigned external control panel for producing high-quality sections.



The retraction function can be set up On or Off and the retraction distance can also be adjusted. There are two speeds can be selected for moving the specimen forward or backward. The feed function allows the specimen move back to a memorized cutting position, which specially designed for a large number of standard cassettes sectioning .

## AEM 480 Fully-automatic Microtome



AEM 480 is a fully-automatic microtome designed with smooth running handwheel and stepping-motor, all advanced technologies are utilized for precision, efficient, stable and superior sectioning.

The unique User-friendly display and the redesigned external control panel for producing high-quality sections .



AEM 480 allows users to choose between motorized or manual sectioning mode. 5 speeds from slow to fast meet the users' special requirements under the motorized mode. Pushing the emergency stop button immediately stops cutting. The foot pedal controller is also available as an option feature.

## Embedding Dispensing Console

Voltage/Frequency	220 V ± 10% , 50 HZ / 110 V ± 10% , 60 HZ
Nominal power	1200 W
Working temperature	from ambient to 90°C Increments 1°C

### Capacity

Paraffin reservoir	6L
Cassettes/molds tray	1.4L (126 cassettes)

### Dimensions

Width	560mm
Depth	640mm
Height	400mm
Weight	about 26 KG

## Cryo Console

Voltage/Frequency	220 V ± 10% , 50 HZ / 110 V ± 10% , 60 HZ
Nominal power	330 W
Working temperature	15°C--15°C Increments 1°C

### Dimensions

Width	390mm
Depth	560mm
Height	390mm
Weight	about 24 KG
Capacity	70 cassettes

## Thermal Console

Voltage/Frequency	220 V ± 10% , 50 HZ / 110 V ± 10% , 60 HZ
Nominal power	335 W
Working temperature	from ambient to 75°C Increments 1°C

### Capacity

Cassettes/molds tray	2.5L (252 cassettes)
----------------------	----------------------

### Dimensions

Width	300mm
Depth	540mm
Height	390mm
Weight	about 7.5 KG



AMOS SCIENTIFIC PTY.LTD.  
 Address: 37/632 CLAYTON ROAD , CLAYTON SOUTH VIC 3169 , AUSTRALIA  
 Tel: +61-3-95518850 Fax: +61-3-95516885  
 Website: www.amos-scientific.com  
 Email : info@amos-scientific.com



AEC380-T



AEC380-C



AEC380-M



**AMOS SCIENTIFIC**  
**AEC 380**  
**Embedding Center**

BETTER HISTOLOGY SOLUTION  
 BETTER LIFE FROM HEALTH



Thermal Console

Embedding Dispensing Console

Cryo Console

FOOT PADEL



### Embedding Dispensing Cosole

- Large paraffin tank capacity: 6 Liter
- The lamp brightness can be easily adjusted, according to ambient light brightness
- The large LCD screen is based on user- friendly design
- Automated “Wake up” function can be easily programmed

### Cryo Console

- The paraffin block can be cold down rapidly by the stable and environmental friendly compressor
- The temperature range is between -15 to 15° C
- 70 cassettes can be loaded on this large work surface at the same time
- User- friendly operation interface



## Characteristics



### Working surface

- The extra large working surface allows the pathologist to process more samples simultaneously
- The paraffin flow can be precisely controlled by the finger touch pad or the foot pedal
- The paraffin flow rate can be controlled by the knob
- The “built-in” forceps heating station can heat 6 forceps simultaneously



- The full information LCD screen shows current/setting temperature of paraffin tank, left/right tray, platform surface and forceps heating station respectively
- The peltier cold spot’ s temperature range is from ambient to -5°C



FOOT PADEL



### Thermal Console

- The Thermal console is compatible with all types of cassettes, embedding molds and processed tissues specimens
- The large capacity: 2.5L (252 cassettes)
- The temperature range can be set from ambient to 75°C
- This thermal console can also be used as a water bath

### Paraffin Trimmer (option)

- The paraffin trimmer is based on Ergonomic Design
- The heated surface allows the users to remove excess paraffin easily
- The temperature range on surface can be set between ambient to 90° C
- The user friendly interface allows users to operate it easily and safely





AST 500



AST 550

# CRYOSTAT MICROTOME

AST 500 SEMI-AUTOMATIC CRYOSTAT MICROTOME

AST 550 FULLY-AUTOMATIC CRYOSTAT MICROTOME

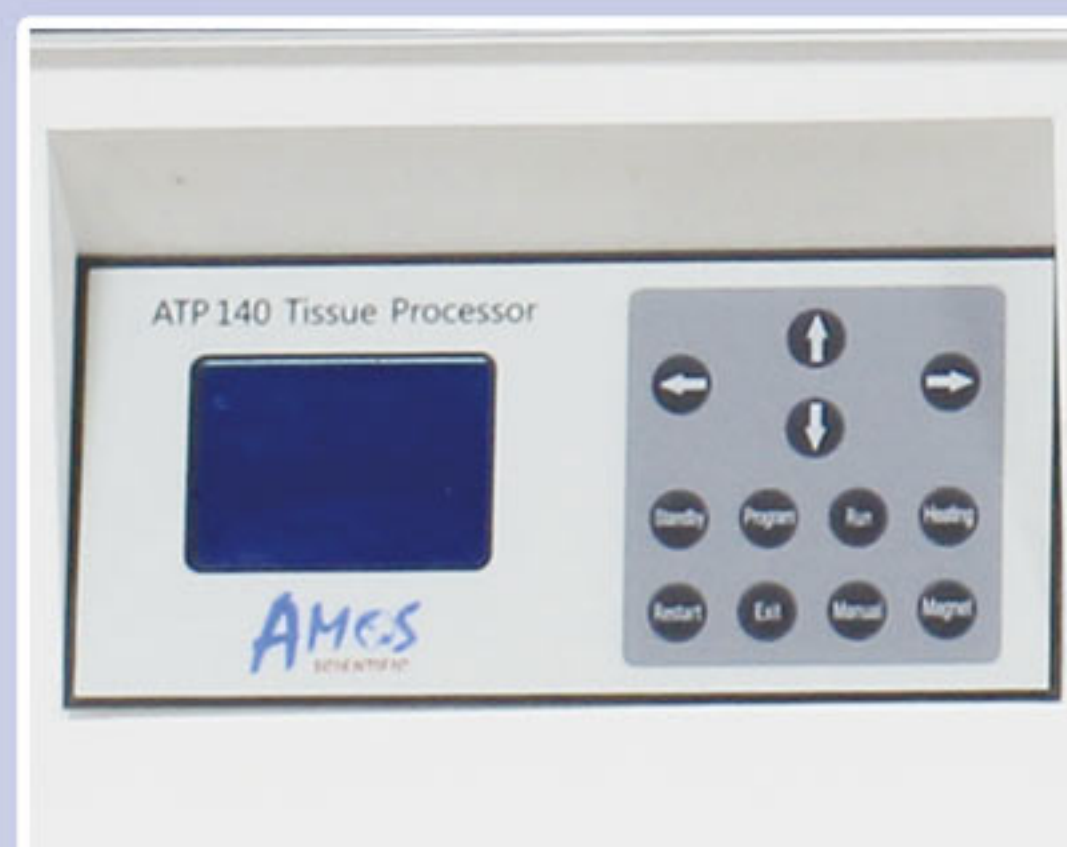
BETTER HISTOLOGY SOLUTION BETTER LIFE FROM HEALTH

# Cryostat Microtome Design Features

AST 500 Semi-automatic Cryostat Microtome	AST 550 Fully-automatic Cryostat Microtome
It is designed under overall engineering and ergonomic concept. All the components are processed by computer numerical controlled machine.	
Retraction function prevents specimen damage from blade.	
Total thickness calculation.	
The low temperature refrigeration system with environment friendly refrigerant R404.	
Adopt UV and O <sup>3</sup> sterilize for 30 minutes every time.	
Peltier specimen clamp refrigeration can be turn On or Off manually.	
Two defrosting methods: manual and automatic.	
-	Two running ways : manual and automatic.
-	Emergency stop function : Press the red button to stop running when any emergency happens.
The high precision unit is enclosed outside the cryostat chamber to prevent it from thermal expansion and contraction , and keeps minimum maintenance requirement .	
Artificial intelligent interface is easy to learn and operate.	
LCD screen can display all information including thickness, thickness sum , controlling time, temperature, timed on/off and so on. Sleep Function. After activating this function, the temperature in cryostat chamber can be kept between -1℃ and -10℃; After stopping this function, the temperature in freeze chamber will arrive to working temperature within 30 minutes.	
Control panel with locking function could avoid wrong operation.	
Handwheel locking function.	
Wide freezing shelf can load 8 specimen cassettes simultaneously ,and two of them are equipped with peltier to meet different temperature .	

# Cryostat Microtome Technical Specifications

	AST 500	AST 550
Freeze chamber minimum temperature	-35℃±2℃	
Freeze shelf minimum temperature	-45℃±5℃	
Lowest temperature of Peltier unit on freeze shelf	-55℃±5℃	
Lowest temperature of Peltier unit on Specimen Clamp	-50℃±5℃(working time of Peltier is 15 minutes.)	
Maximum specimen size	35×35mm	
Specimen vertical stroke	48±1mm	
Specimen horizontal stroke	15±0.2mm	
Coarse feeding speed	300μm/s (slow) or 900μm/s(rapid)	
Section thickness range	0μm ~ 100μm adjustable; 3μm ~ 10μm, in 1μm increments; 20μm ~ 100μm, in 5μm increments;	0μm ~ 3μm, in 0.5μm increments; 10μm ~ 20μm, in 2μm increments;
Trimming thickness range	10μm ~ 600μm adjustable; 50μm ~ 100μm, in 10μm increments;	10μm ~ 50μm, in 5μm increments; 100μm ~ 600μm, in 50μm increments;
Retraction range	0~80μm adjustable , in 5μm increments	
Electric coarse feed	-	Slow 300μm/s ± 30μm/s Rapid 900μm/s ± 30μm/s
Motorize cutting speed	-	75-230mm/s±10%;
Voltage and frequency	220 V ± 10% , 50 HZ / 110 V ± 10% , 60 HZ	
Nominal Power	1000 W	
Weight	about 130 KG	
Dimensions(W×D×H)	805×715×1210mm	



# Tissue Processor

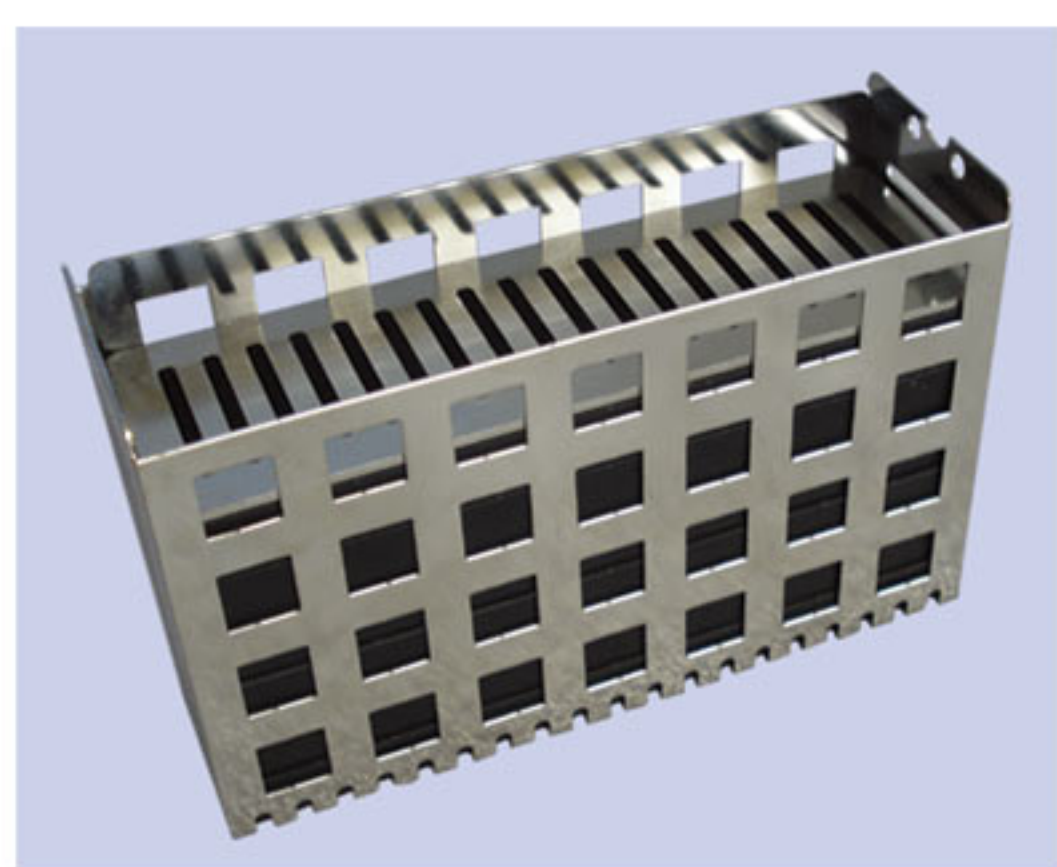
## ATP 140 TISSUE PROCESSOR

BETTER HISTOLOGY SOLUTION BETTER LIFE FROM HEALTH

## Characteristics

- Protecting samples from damages: The rack returns to the protection tank to avoid samples from damages if there were any contact between the rack and obstacles when moving into any reagent tank during operation.
- Self-adapted lids utilized with the multiple gasket seal offer the excellent sealing performance, which minimized the volatilization of reagents.
- The organic glass cover, sealing strips and double layer active carbon filter ensure no air contamination between laboratory and staining chambers.
- Delay function be activated automatically and the delay range from 0-48 hours.
- During staining procedure, the staining time can be adjusted by manual operation function on control panel .
- Re-run function: In case of “power off” or unsatisfied staining performance, the re-run function can start the re-staining procedure from a certain step .

## Universal rack system



Rack



Open-flat grid



2X7 grid panel  
for large tissues

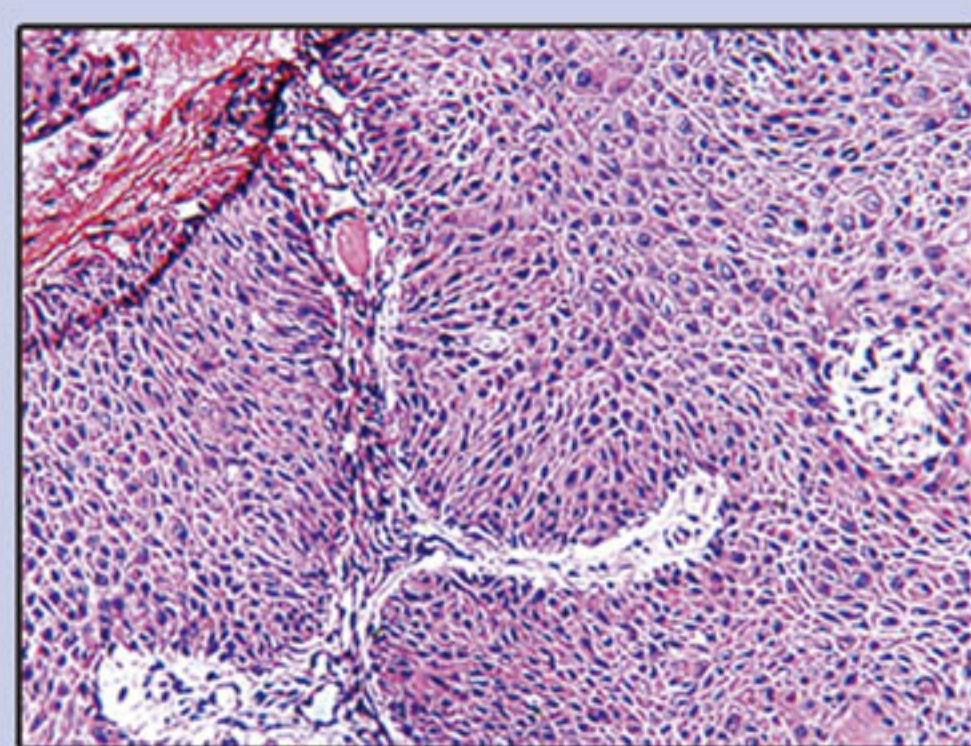


3X10 grid panel  
for small tissues

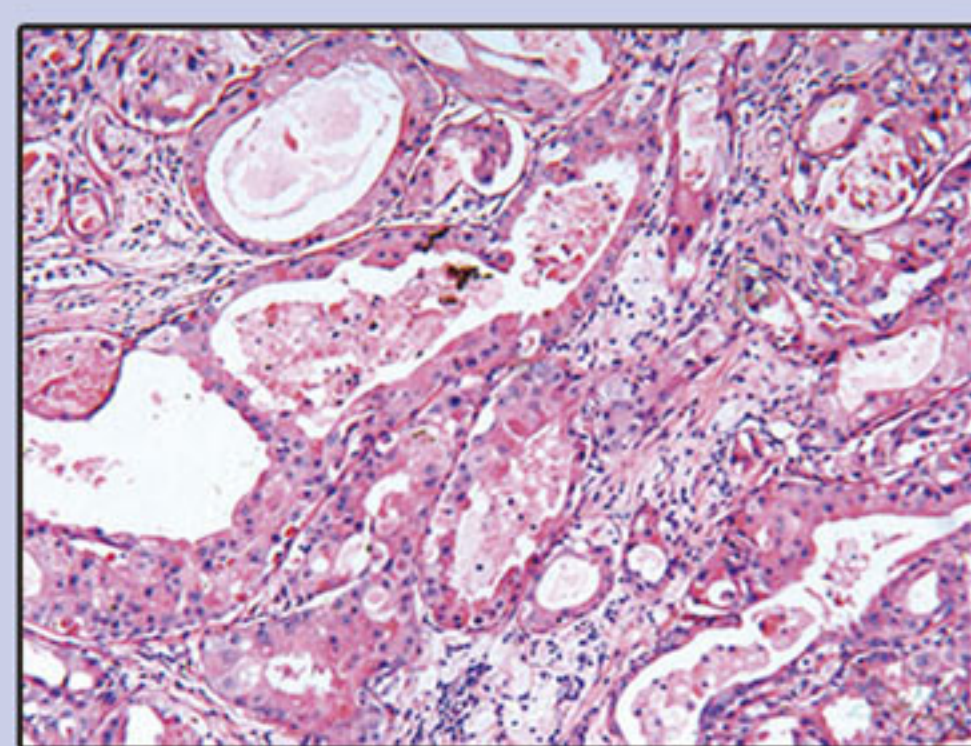
## Technical Specifications

NO	Specification	ATP 140
1	Number of racks	2
2	Number of tanks	14 (10 reagent plastic tanks & 4 wax stainless steel tanks)
3	Number of stored programs	8 (4 groups)
4	Capacity of tank	1.3L
5	Number of samples in process one time	144 standard cassettes
6	Staining time in each tank	1 minute ~ 99 hours and 59 minutes
7	Agitation time in each tank	5 sec~30 sec adjustable (default value is 15 sec) Two baskets in turn every 5 minutes
8	Drip stay time	2 seconds~ 99 seconds , adjustable (default Value:20 sec)
9	Delay time	0~48 hours
10	Temperature range	55°C~70°C
11	Temperature tolerance	± 1°C
12	Power supply	220V±10%, 50Hz / 110V±10%, 60Hz
13	Max power	450 W
14	Dimensions ( W×D×H)	1247×470 × 550 mm
15	Weight	about 75 KG

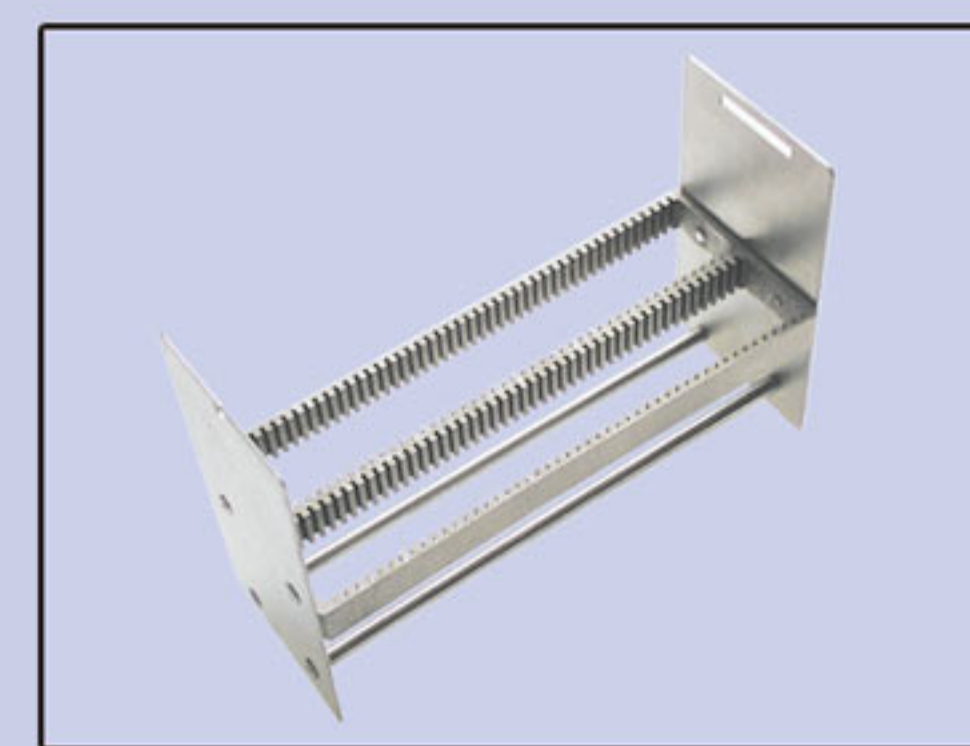
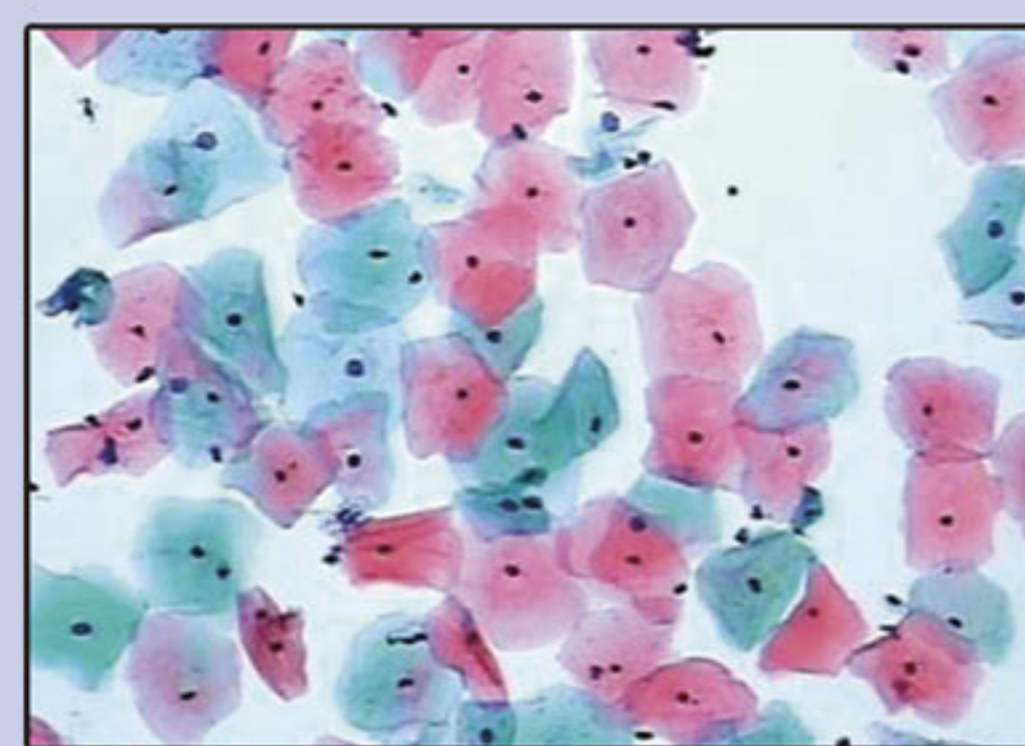




H&E Staining



Pap Staining



Staining Rack

# ASS190 Slide Stainer

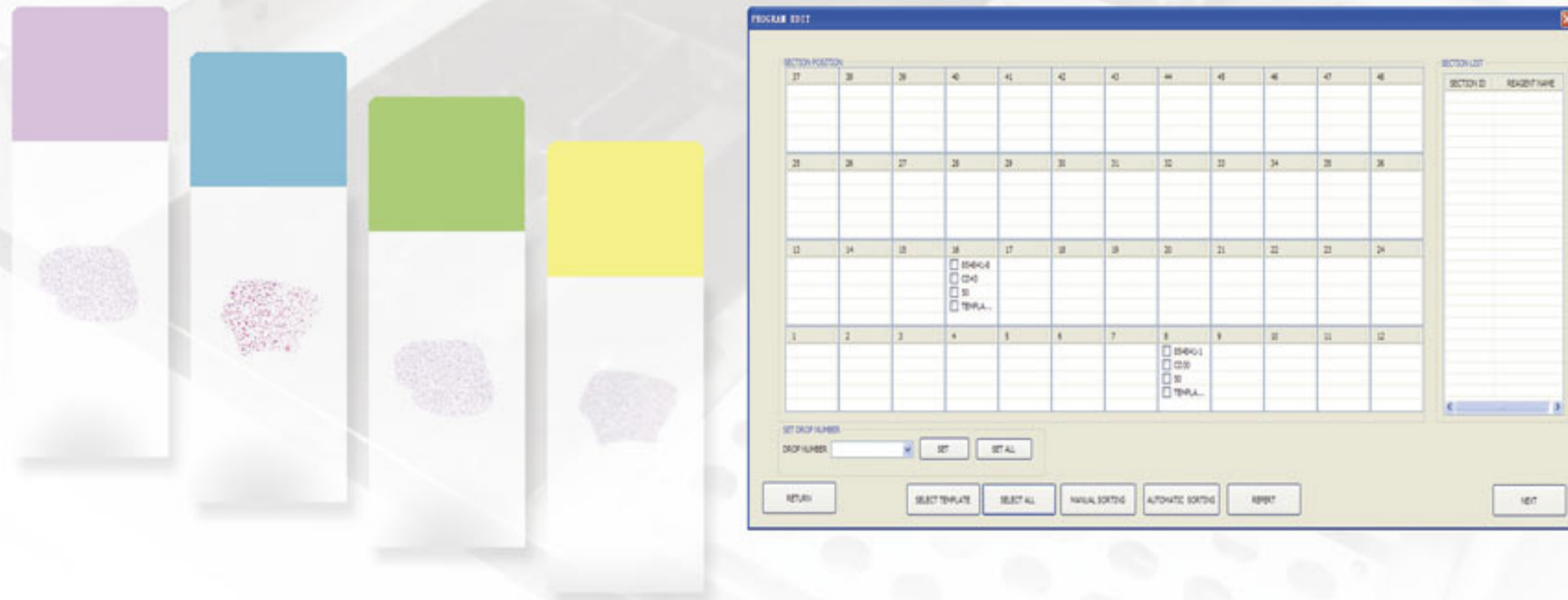
## Characteristics

- Advanced Microcomputer intelligent control system .
- Two protocols can run simultaneously in two slide racks respectively that can dramatically improve staining efficiency .
- In addition to staining function, users also can set up maximum 25 steps in one programs for special requirements tests.
- 4 groups (8 different) programs can be set up respectively for meeting various staining requirement, washing function is also included.
- Automated program checking function: this function can protect the device from damages in case of incorrect programming .
- Alarm function : the alarm“beeps” goes off once any incorrect operation is detected .
- Second running function : it can start to run from desired step when it happens to some problem or does not get good effect in first running .
- The high-performance stepping motor utilized to ensure the stability and accuracy with low noise level .
- The streamlined exterior shape makes it easier to clean .
- Concerning users’health: The active carbon utilized to absorb volatile gases and prevent toxic gases from entering the laboratory environment .
- LCD: with user-friendly keyboard to program and display all information concerning staining .
- Protection function: it can prevent damage to tissue samples caused by rack movement be physically blocked while in operation .
- The in/out water pipe allows to wash the tissue at any stages .

## Technical Specifications

NO	Specification	ASS 190
1	Quantity of slide racks	2
2	Capacity	96 slides at a time ( 48 slides on each slide rack)
3	Number of tanks	19
4	Volume of container	800ml for each tank , the first and second tank comprise the washing station
5	Staining time in each tank	1 seconds~99minutes 59 seconds , can be set as desired
6	Two racks can be agitated every 15 seconds and the agitation time can be set from 5 to 30 seconds	
7	Voltage/Frequency	220V ± 10% , 50HZ / 110V ± 10% , 60HZ
8	Power	120 W
9	Dimensions ( W×D×H)	1247x470x550mm
10	Weight	about 75kg

## AIHS 620 Immunohistochemistry Stainer



- Program can be changed at any time if required and can be made according to the user's requirements.
- More than one hundred programs can be made for standardized Immunostainer and rapid special staining.
- One computer can control several Immuno-Histo Stainers simultaneously.
- To ensure the continuity and completeness of an experimental running, an external power supply can be provided.
- Such running conditions as running time and running progress can be clearly monitored at any time.

### Technical Parameters:

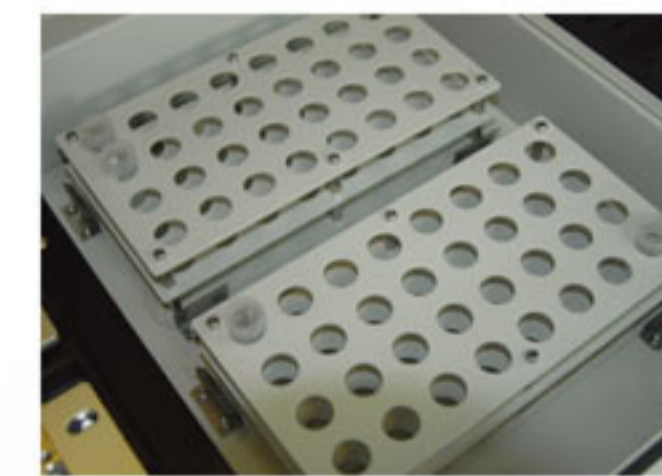
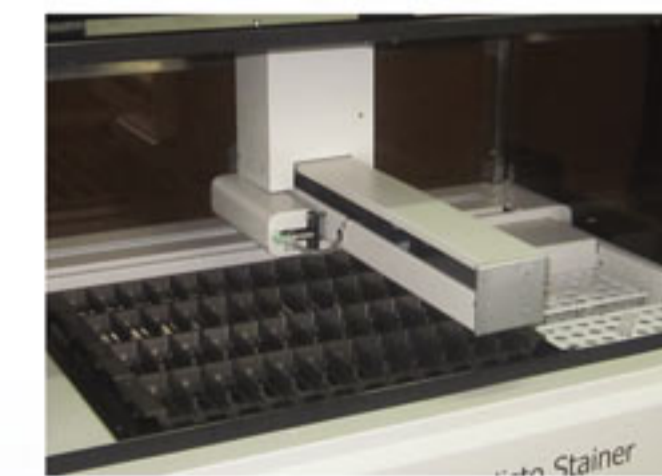
- Capacity: 48 microtome section and 64 kinds of reagents
- Reagent titer increment: 50ul, 75ul, 100ul, 150ul, 200ul, 250ul .
- Outside dimensions(W × D × H): 1015 × 665 × 520 mm
- Power supply: 220V ± 10% at 50/60Hz or 110V ± 10% at 50/60Hz
- Nominal power: 350W
- Weight: about 116Kg



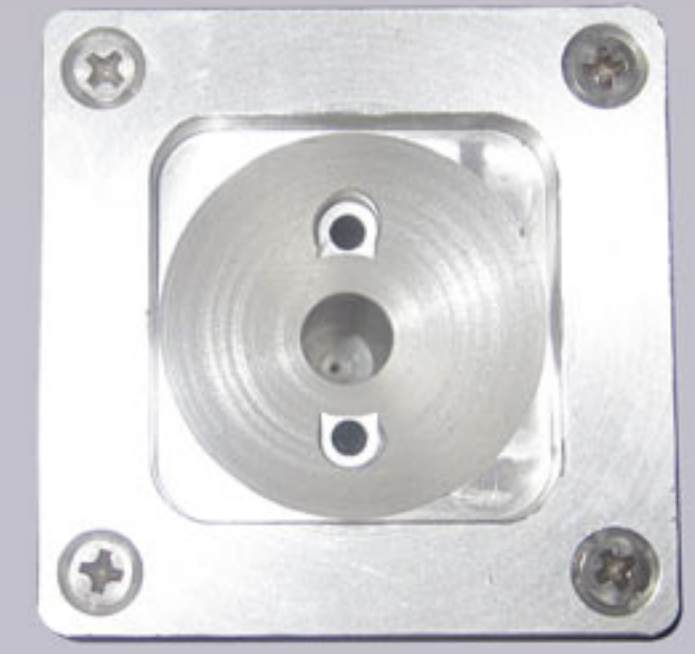
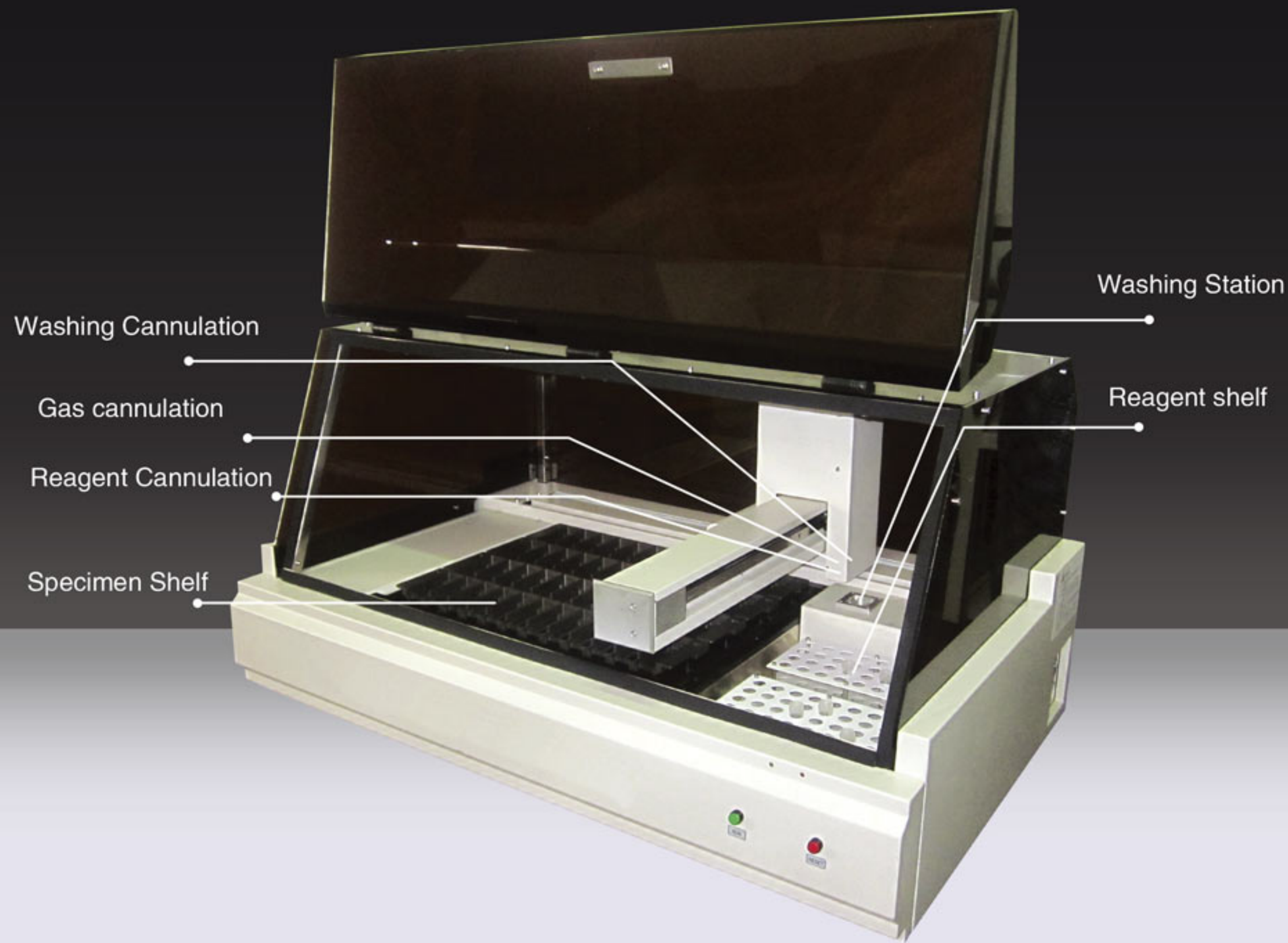
AMOS SCIENTIFIC PTY.LTD.  
Address: 37/632 CLAYTON ROAD , CLAYTON SOUTH VIC 3169 , AUSTRALIA  
Tel: +61-3-95518850 Fax: +61-3-95516885  
Website: www.amos-scientific.com  
Email : info@amos-scientific.com



BETTER HISTOLOGY SOLUTION  
BETTER LIFE FROM HEALTH

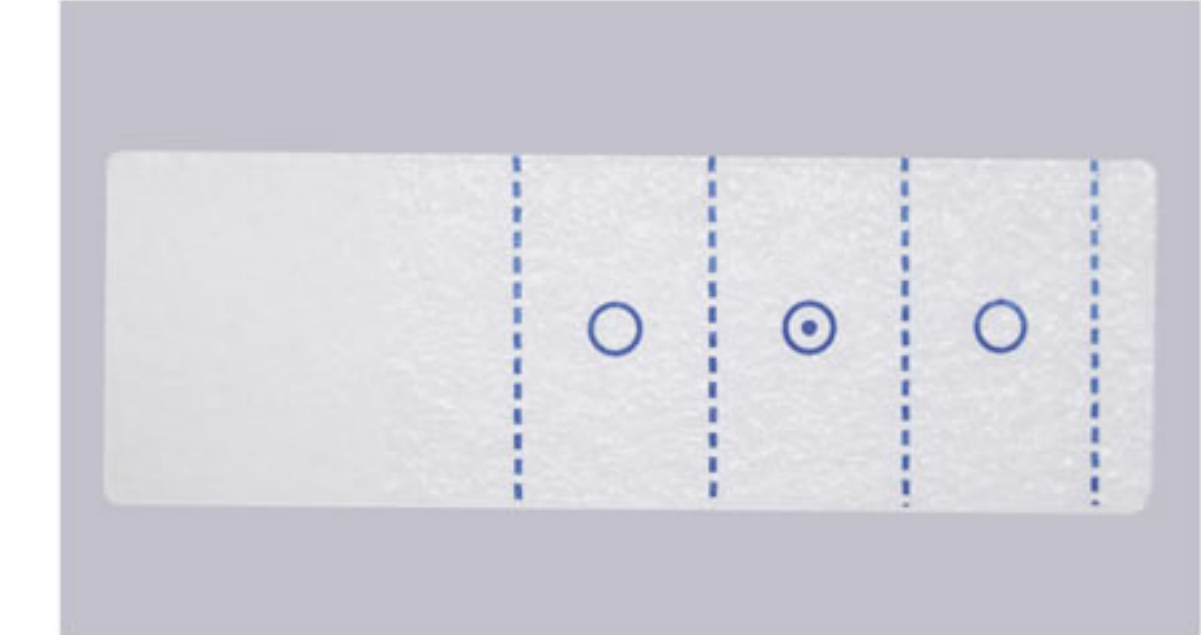


# AIHS 620 IMMUNOHISTOCHEMISTRY STAINER



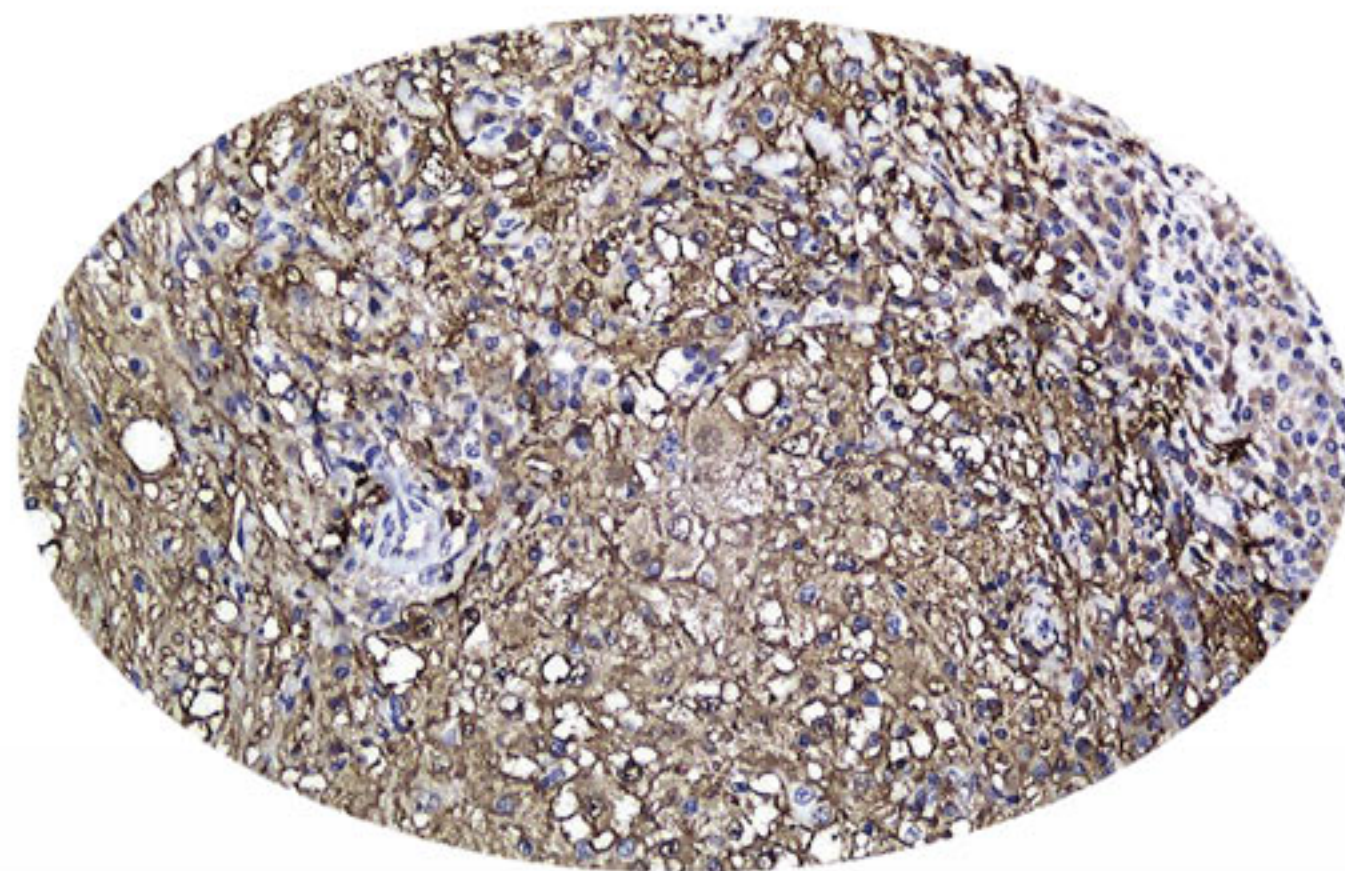
The clean-out opening of the drop-tube can make both the interior and exterior wall of the drop-tube cleaned and avoid the cross pollution.

Slice loading frame with convenient pin insertion. Keep the slice smooth and stable.



64 kinds of reagent location frame. The reagent bottle can be taken out and place the antibody in the refrigerator after its usage.

The subarea location of the slice assures that the minimum reagent quantity exerts its maximum effect. 1-3 tissue can be dyed once at the same time.



The standardization of the test method of Immunostainer is becoming more and more important with the wide use of the Immunostainer technology in the modern pathologic diagnosis because it has a bearing on the prognosis and treatment of the patient.

AIHS620 Immunohistochemistry Stainer adopts European advanced technology with intelligent program interface which is easy to understand and operate, thus providing a scientific and reliable platform for the standardization of the test method of Immunostainer.

- Open the system, suitable for reagents of different company
- Suitable for various kinds of specimen: paraffin, refrigerated and punctured microtome sections, cell smear and marrow microtome section
- Precise micro dropping rates of reagent adjustable to the minimum of 50ul, thus saving expensive reagent.
- Different dropping rates of antibody can be set for different tissue section.
- Excellent overall sealing keeps the inside environment wet.
- Contents are under the protection of secret code.
- The dropper point surface is Teflon treated and can be thoroughly cleaned to avoid cross contamination.
- Movable scavenging gentle air blows off the liquid residue on the tissue sections.



BETTER HISTOLOGY SOLUTION  
BETTER LIFE FROM HEALTH

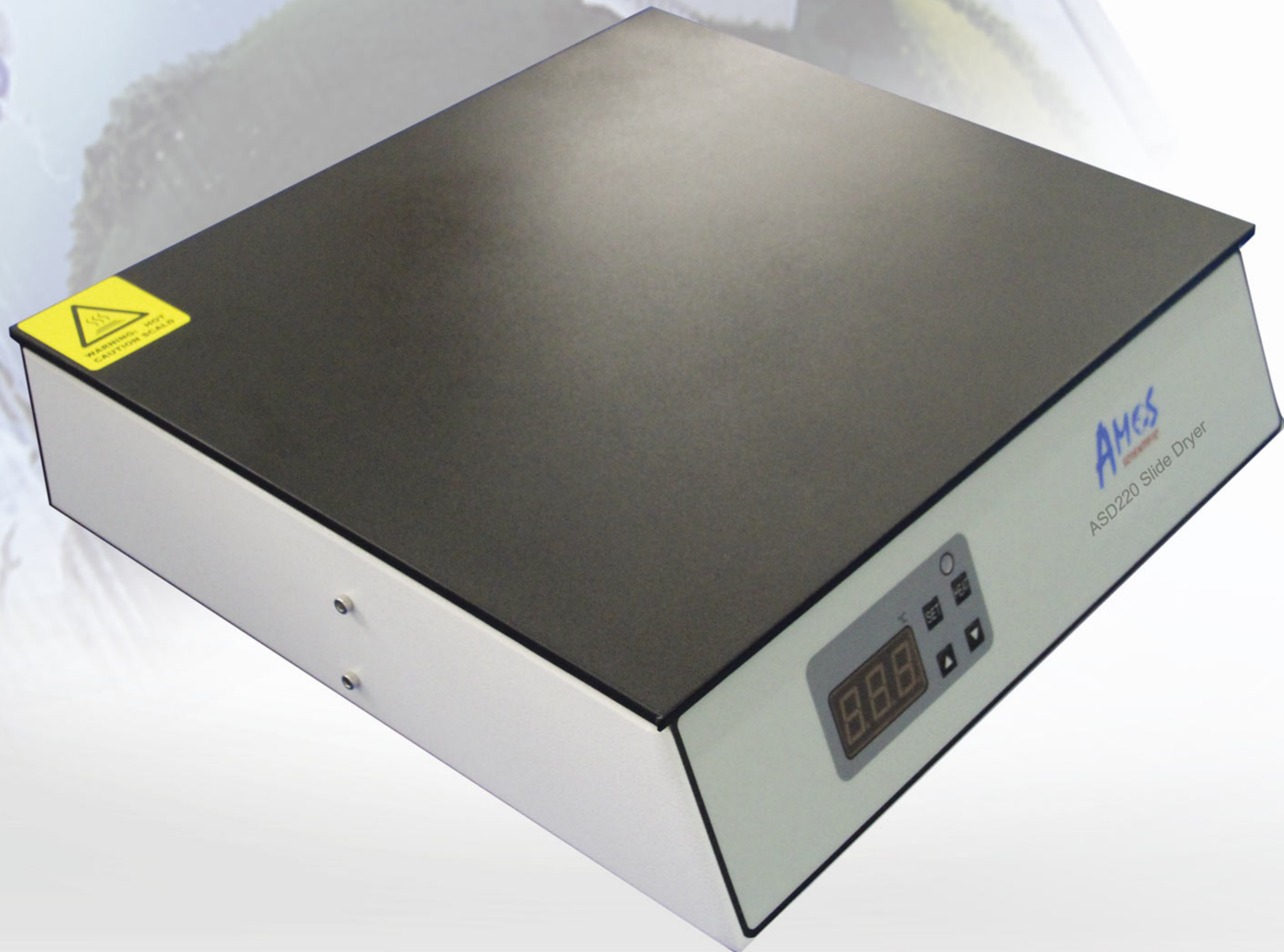


## AWB 210 WATER BATH

### Technical data of AWB 210 Water Bath

- Water trough dimensions: 230 × 180 × 56 mm
- Temperature control accuracy: ± 1 °C
- Temperature range: ambient temperature ~75 °C
- Rated voltage: 220V ± 10% 50/60 Hz or 110V ± 10% 50/60 Hz
- Nominal power: 350W
- Outside dimensions (W × D × H): 328 × 300 × 85 mm
- Weight: about 2.4kg
- Capacity : 2.3 L





## ASD220 SLIDE DRYER

### Technical data of ASD220 Slide Dryer

- Table top: 324 × 272 mm
- Temperature control accuracy : ± 1 °C
- Temperature range: ambient temperature ~90 °C
- Capacity : can load 40 slides simultaneously
- Rated voltage: 220V ± 10% 50/60 Hz or 110V ± 10% 50/60 Hz
- Nominal power: 350W
- Outside dimensions (W × D × H): 324 × 300 × 85 mm
- Weight: about 2.75kg

