

Hongke Dental Unit

Other cheaper dental unit

The basic plate and frame



PK



hongke steel plate

they cut a lot steel from the basic steel plate to reduce the materials cost



PK



hongke steel thickness is 15.9 mm

the steel thickness is 11.5mm



hongke plate width is 51 cm



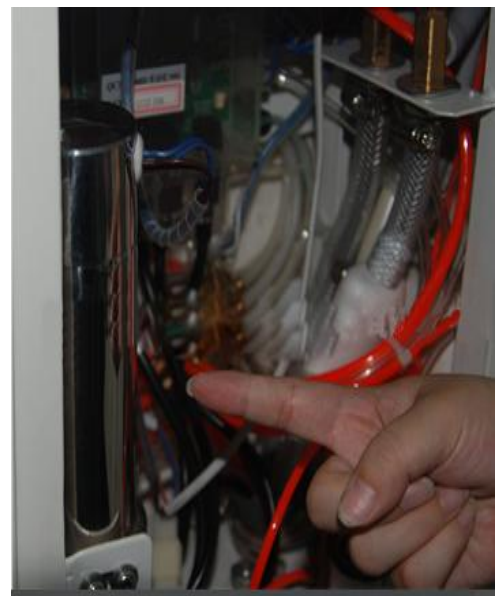
the width is 37 cm

Conclusion:

Hongke steel plate's width, thickness is better than other cheaper the basic of dental unit become more heavy and stable.



Hongke Dental chair reasonable design, waterways and circuits were installed in different side of dental chairs cabinet, to avoid damage due to water leakage circuit. Water heater is 24V safe voltage.



Waterways and circuits are mixed together, it's seem that a little messy ,cause maintenance is too much trouble, once the water leak will cause damage to the circuit board which lead dental chair does not work,Some of them still use 220V water heater, it's not safty .

Spittoon



Hongke dental unit with rotatable ceramic spittoon

PK



with Fixed spittoon



Hongke use better transformer 260-280W, make the safety

PK



180-200W transformer



Hongke use 6 fuse to protect the dental unit.

PK



just with 4 fuse

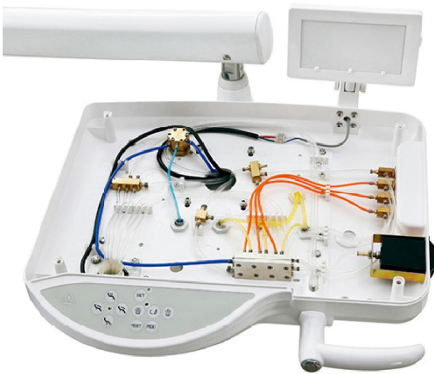
Operate lamp



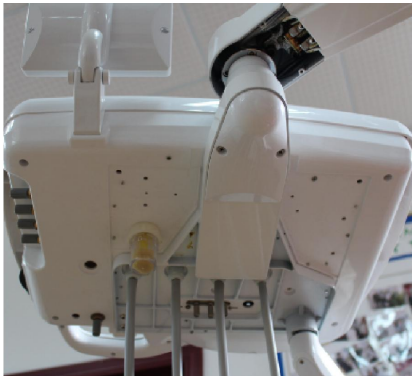
with sensor LED lamp and the handle can be autoclaved



plastic lamp arm and small manual lamp ,can not be autoclaved



PK



hongke tray is made of injection molding process ABS plastic ,the thickness and intensity is very good, the valve made of copper, on the button of tray,use molding aluminium plate,the whole instrument tray become more stable

the whole tray is normal plastic which is Blister Process, the thickness and strength not good , plastic valve was used ,the tube is messy,the whole set instrument tray Shake

Assistant tray



PK



assistance tray cover is made of injection molding process ABS plastic and with assistant control panel

normal small assistance tray and without the assistant control panel

Foot control



PK



Hongke multifunction foot control

chaeper foot control

the main advantages of basic model HK-610 details as follow:

1. most of plastic part made of injection molding ABS plastic , so the whole set dental unit more Standardization
2. most of metal parts make of injection molding aluminum,make sure the dental unit more stable.
3. Assembly of mechanical and electrical part is very clean and very executed , it's easy to maintenance



1. injection molding plastic



2. injection molding aluminum



3. ceramic molding



HK-630 Luxiury model advantages

Floor-type box ,it's easy to move into the small door,make the installation more easy and stable



LED inductive sensor operating lamp (6 lamps) ,detachable hander can be autoclave



with Linak danish motor.



Imported good quality solenoid valve



**90°rotatable Ceramic spittoon,
it's convenient for patients.**

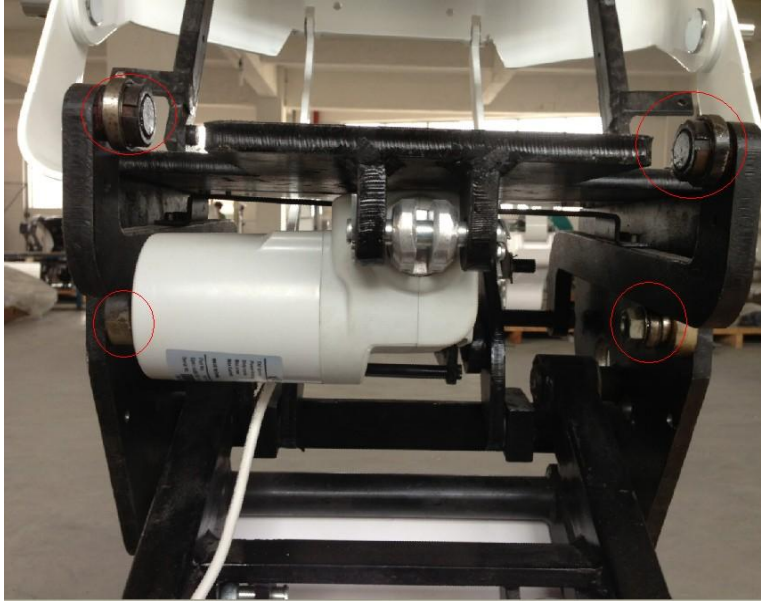


rotatable small glass tray

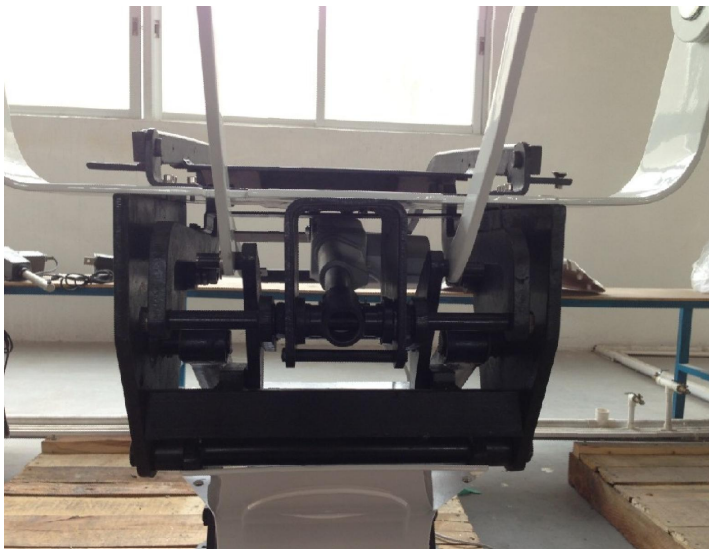


HK-650 Luxiury model advantages

with high quality Taiwan motor, the seat rest frame completely different design ,there are 4 pcs bearing(the red color circle)



the back rest frame completely different design



the specially complete dental unit frame



The human engineering design ,the speed of up and down ,the backrest is 1/3 faster than common chairs,the patient will feel more comfortable



Special design of armrest



rotatable Ceramic spittoon



LED inductive sensor operating lamp ,detachable handle can be autoclave



beautiful arm



Our Dental unit get CE and ISO 13485 certificate

you can check the details in the website:

Step 1 open the link:

www.tuev-sued.de/industry_and_consumer_products/certificates

Step 2 input certificate number: G2 13 04 83445 002

ZERTIFIKAT ♦ CERTIFICATE ♦ CERTIFICADO ♦ CERTIFICAT
♦ CERTIFIKAT ♦ CERTIFICATE ♦ CERTIFICADO ♦ CERTIFICAT


Product Service

EC Certificate

Production Quality Assurance
Directive 93/42/EEC on Medical Devices (MDD), Annex V
(Devices in Class IIa, IIb or III)
No. G2 13 04 83445 002

Manufacturer: Foshan Hongke Medical Instrument Factory
B1, No 1, Langqing Road, Lianhe Industrial Zone, Luocun Nanhai District
528226 Foshan, Guangdong
PEOPLE'S REPUBLIC OF CHINA

EC-Representative: SPETECHCULAR LTD
10 Quanton Close
Cambridge
CB9 6LR
UNITED KINGDOM

Product Category(ies): Dental Units

The Certification Body of TÜV SÜD Product Service GmbH declares that the aforementioned manufacturer has implemented a quality assurance system for manufacture and final inspection of the respective devices / device categories in accordance with MDD Annex V. This quality assurance system conforms to the requirements of this Directive and is subject to periodical surveillance. For marketing of class IIb and III devices an additional Annex III certificate is mandatory. See also notes overleaf.

Report No.: 748439951

Valid from: 2013-06-12
Valid until: 2015-06-11

Date: 2013-06-18


Hans-Holger Junker



TÜV SÜD Product Service GmbH is Notified Body with identification no. 0123

Page 1 of 2

TÜV SÜD Product Service GmbH - Zertifizierstelle - Waldenstrasse 95 - 80333 München - Germany