



Intra Pins

Intramedulläre (Mini) Nägel

Clavos (mini) intramedulares

**Ortho Select GmbH**

Eltastrasse 2  
D – 78573 Wurmlingen  
Germany

Tel: +49-(0)7461-96632-30  
Fax: +49-(0)7461-96632-35

[info@ortho-select.de](mailto:info@ortho-select.de)  
[www.ortho-select.de](http://www.ortho-select.de)

16-IP-012011



*Titanium Alloy – Titanlegierung – Aleación Titanio ISO 5835-3*  
*Length – Länge – Longitud: 450 mm*

Diameter Durchmesser Diámetro (mm)	Colour Code Farbcodierung codificación de color		Protecting Caps Schutzkappen capuchónes
2,0	green – grün – verde	7300-1-4520	7200-0-2020
2,5	red – rot – roja	7300-1-4525	7200-0-2025
3,0	yellow – gelb – Amarillo	7300-1-4530	7200-0-2030
3,5	blue – blau – azul	7300-1-4535	7200-0-2035
4,0	purple – violet – violeta	7300-1-4540	7200-0-2040
4,5	grey – grau - gris	7300-1-4545	7200-0-2045
5,0	titanium – titan - titanio	7300-1-4550	7200-0-2050

**Features:**

- Fast and low-cost treatment of shank fractures in children.
- Little additional traumatization
- Low complication rate
- Excellent cosmetic results
- Does not interfere with growth of long bones during the healing process.
- Three point intra-medullary fixation that allows to exercise and load stable treatment of metaphysical and diaphysical fractures at all movement levels.
- Atraumatic Tip for easy gliding inside the corticalis
- Flat ends for better visualization during insertion
- Accelerated bone healing process supported by micromovements at the fracture site.
- Early mobilisation
- Different diameters adapting adequately to various bone rigidity.
- Titanium allows the nail to be left in situ for a longer period of time
- Protection caps available for prevention of tissue provocation.

**Please note:**

- Do not bend or nick the Pins
- OrthoSelect IntraPins are for single use only
- OrthoSelect Intra Pins must be removed



Awl  
Reibahle  
Escariador

7200-0-2100 3,0 mm  
7200-0-2101 4,0 mm

---



Front Cutter  
Kopfschneider  
Alicates para cortar clavos frontales

7200-0-2110 large, up to 4,7 mm  
7200-0-2111 small, up to 3,2 mm

Bolt Cutter with detachable handles  
Bolzenschneider mit abnehmbaren Griffen  
Alicates para cortar clavos con mangos desmontables

7200-0-2112 480 mm

---



Extraction Forceps with ratchet  
Extraktionszange mit Sperre  
Pinza de extracción con cierre

7200-0-2113

---



Slide up, cannulated  
Leicht aufwärts gebogen, kannuliert  
ángulo arriba, canulado

7200-0-2120 up to – bis - hasta 2,5 mm  
7200-0-2121 up to – bis - hasta 5,0 mm

oblique – schrägwinklig – ángulo oblicuo

7200-0-2122 up to – bis - hasta 2,5 mm  
7200-0-2123 up to – bis - hasta 5,0 mm



Mallet  
Hammer  
Martillo

7200-0-2124 350 gr.



T-Handle with key-chuck  
T-Handgriff mit Jacobs Bohrfutter  
Mango en T con porta-broca Jacobs

7200-0-2125

INTRA PIN Plier  
INTRA PIN Fasszange  
Alicate de boca plana para INTRA CLAVOS

7200-0-2126



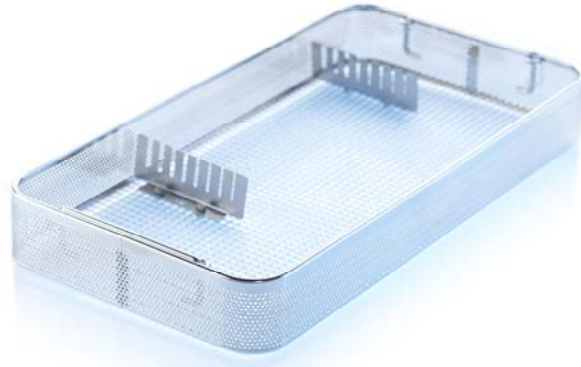
Mallet, cannulated  
Hammer, kannuliert  
Martillo canualdo

7200-0-2127

---

Flat Nosed Plier with groove  
Flachzange  
Alicate plano

7200-0-2128



Basket with Fixation device

7200-0-2129

---



Side Cutter TC  
Seitenschneider TC  
Alicate para clavos TC

7200-0-2130 220mm

---

T-Handle with Quick Coupling  
T-Handstück mit Schnellkupplung  
Mango en T con acoplamiento rápido

7200-0-2131

---



Impactor  
Einschläger  
Instrumento para clavar los clavos

7200-0-2200

*The new IMPACTOR serves for quick insertion, avoiding tire some manipulating during fixation. Reduces the danger of injuries to the surgeon in case of slipping through of nails.*



Slotted Trocar  
Trokar mit Hülse  
Trocar con vaina de sujeción

7200-0-2210

*Trocar with slotted sleeve after opening the medullary canal with the trocar it often happens that the point of entry cannot be found again. By using the new trocar, the slotted sleeve remains in place and avoids unnecessary searching or preparation of the tissue.*

*Nach dem Öffnen des medullaren Kanals mittels Trokar kommt es häufig vor, dass die Eintrittsstelle des Trokar nicht mehr aufgefunden wird. Bei unserem Modell verbleibt die Hülse an der Eintrittsstelle und verhindert dadurch unnötiges Suchen oder das Präparieren von Geweben.*

*Después de abrir el canal medular a través de trocar, a menudo es el caso de que el punto de entrada de los trócares no se encuentra. Con nuestro modelo, la vaina de sujeción se mantiene en el sitio y por lo tanto impide la búsqueda innecesaria o la disección de los tejidos.*

**Intra Pins**  
**Intra Pins**  
**Intra Aguja**

---

**Mini Intra Pins**  
**Mini Intra Pins**  
**Mini Intra Clavos**

*Titanium Alloy – Titanlegierung – Aleación Titanio ISO 5835-3*  
*Length – Länge – Longitud: 100 mm*

Diameter Durchmesser Diámetro (mm)	
1,0	7350-1-1010
1,2	7350-1-1012
1,4	7350-1-1014

Features:

- Fast and low-cost treatment of hand fractures
- Three point intra-medullary fixation that allows to exercise and load stable treatment of metaphysical and diaphysical fractures at all movement levels.
- Atraumatic Tip for easy gliding inside the corticalis
- Flat ends for better visualization during insertion
- Accelerated bone healing process supported by micromovements at the fracture site.
- Early mobilisation
- Different diameters adapting adequately to various bone rigidity.
- Titanium allows the nail to be left in situ for a longer period of time

Please note:

- Do not bend or nick the Pins
- OrthoSelect IntraPins are for single use only
- OrthoSelect Intra Pins must be removed after cure of the fraction.





T-Handle Mini  
Mini T-Handstück  
Mango en T mini

7200-0-2300

---



Awl Mini  
Mini Reibahle  
Mini Escariador

7200-0-2301

---



Pin Cutter TC  
Kneifzange TC  
Alicate para clavos TC

7200-0-2302

---



Sterilization Box Mini  
Mini Sterilisierbox  
Mini estuche para esterilización

7200-0-2303 for – für - para 1,0 mm Pins / Clavos  
7200-0-2304 for – für - para 1,2 mm Pins / Clavos  
7200-0-2305 for – für - para 1,4 mm Pins / Clavos

**Intra Pins**  
**Intra Pins**  
**Intra Agujas**

---

